



antek

antek networks INC.

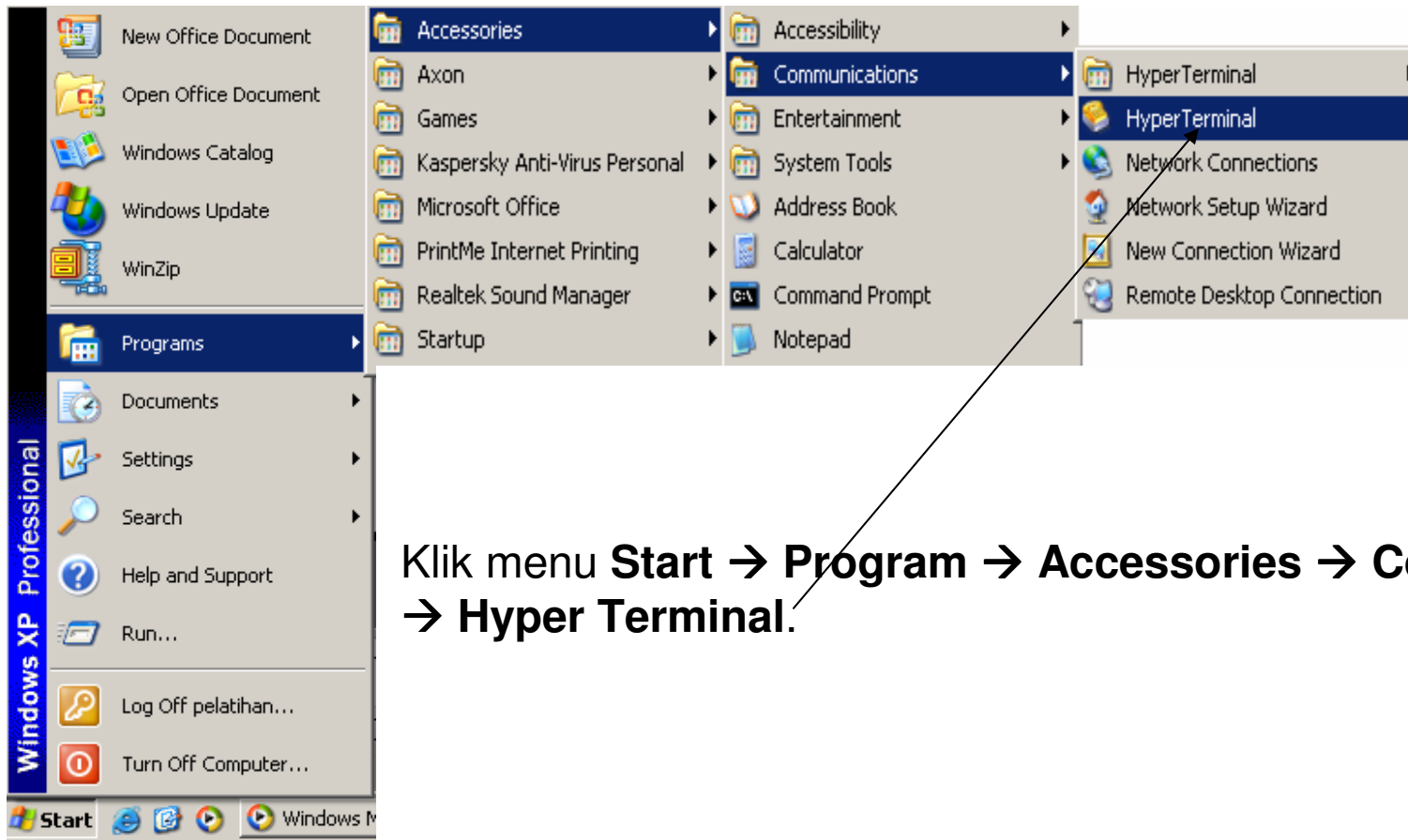
User Manual

VSP-5002 Series

VoIP Gateway

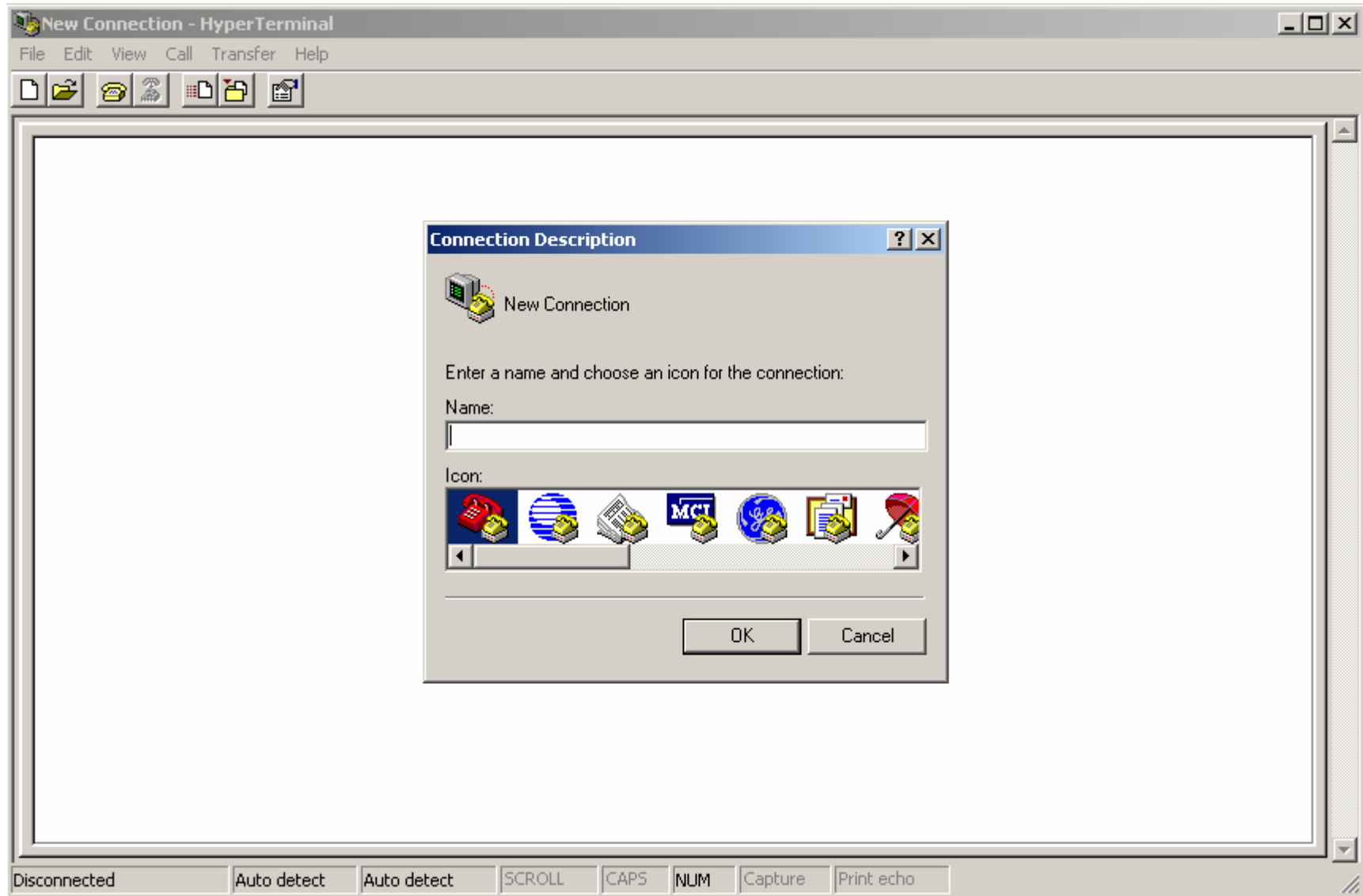
Hyper Terminal

Sebelum masuk ke Hyper terminal, pastikan Antek VSP-5002 telah terpasang pada port WAN. Dan bukalah program Hyper Terminal.

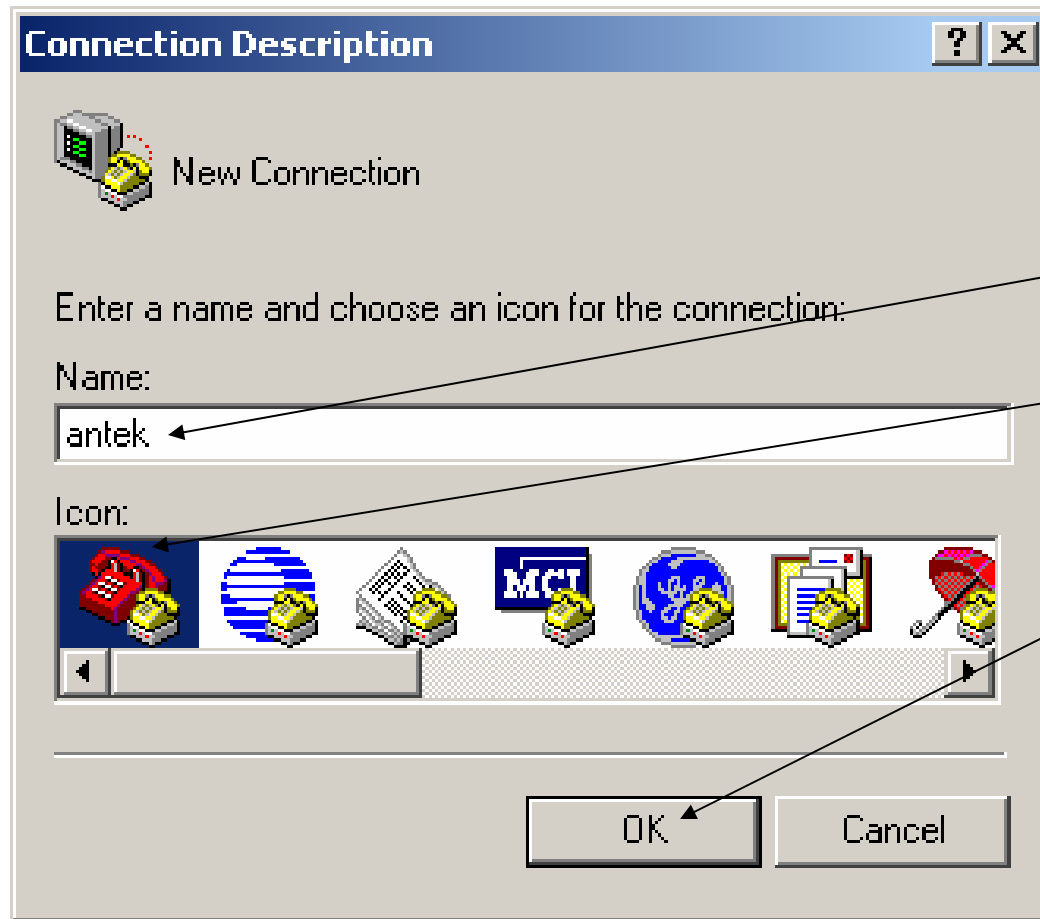


Klik menu **Start → Program → Accessories → Communications → Hyper Terminal.**

Tampilan Hyper Terminal



Connection Description



Isi nama, misalnya **antek**.

Pilih Icon untuk koneksi baru, misalnya 

Klik **OK**.

Connect Using COM1

Connect To ? X

 antek

Enter details for the phone number that you want to dial:

Country/region: United States (1) ▼

Area code: 62

Phone number:

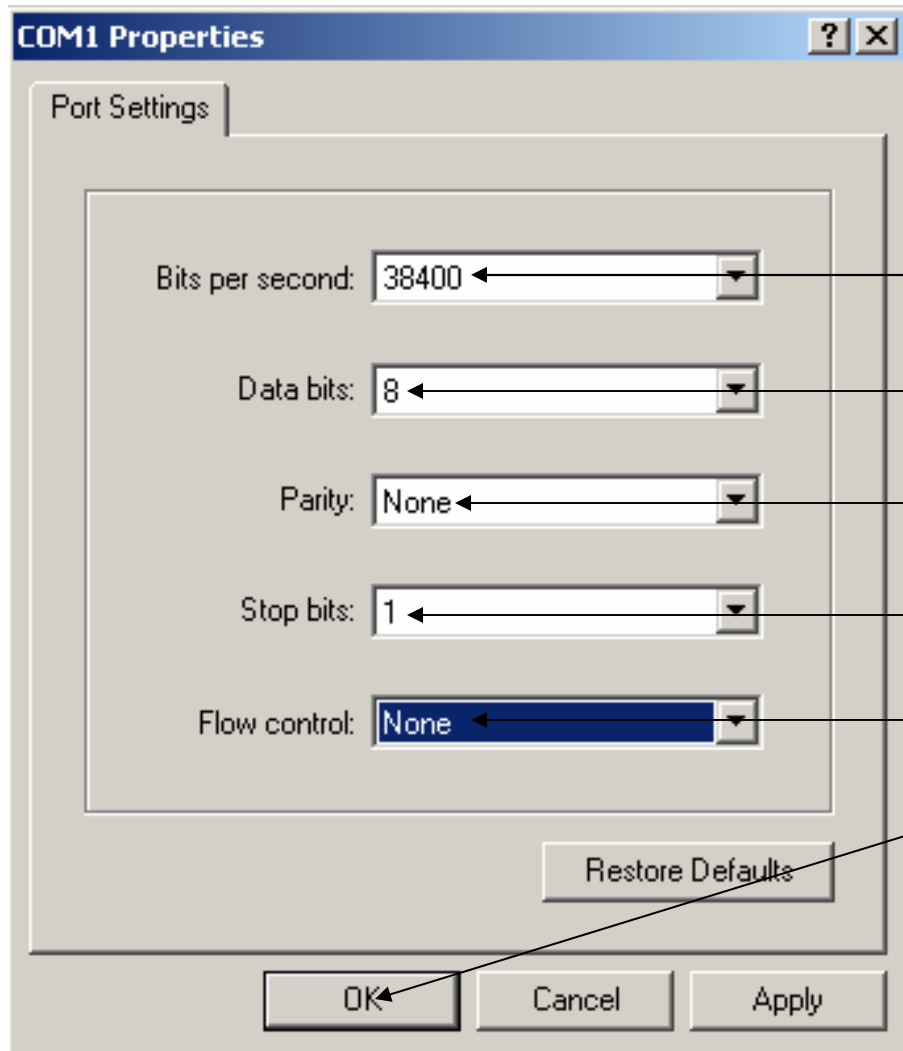
Connect using: COM1 ▼

OK Cancel

Karena Antek VSP-5002 terhubung melalui port COM1 pada komputer Anda, maka pilih Connect using dengan **COM1**.

Klik **OK**.

COM1 Properties



Pilih Bit per second **38400**. Lihat CD / buku manual.

Data bits = **8**.

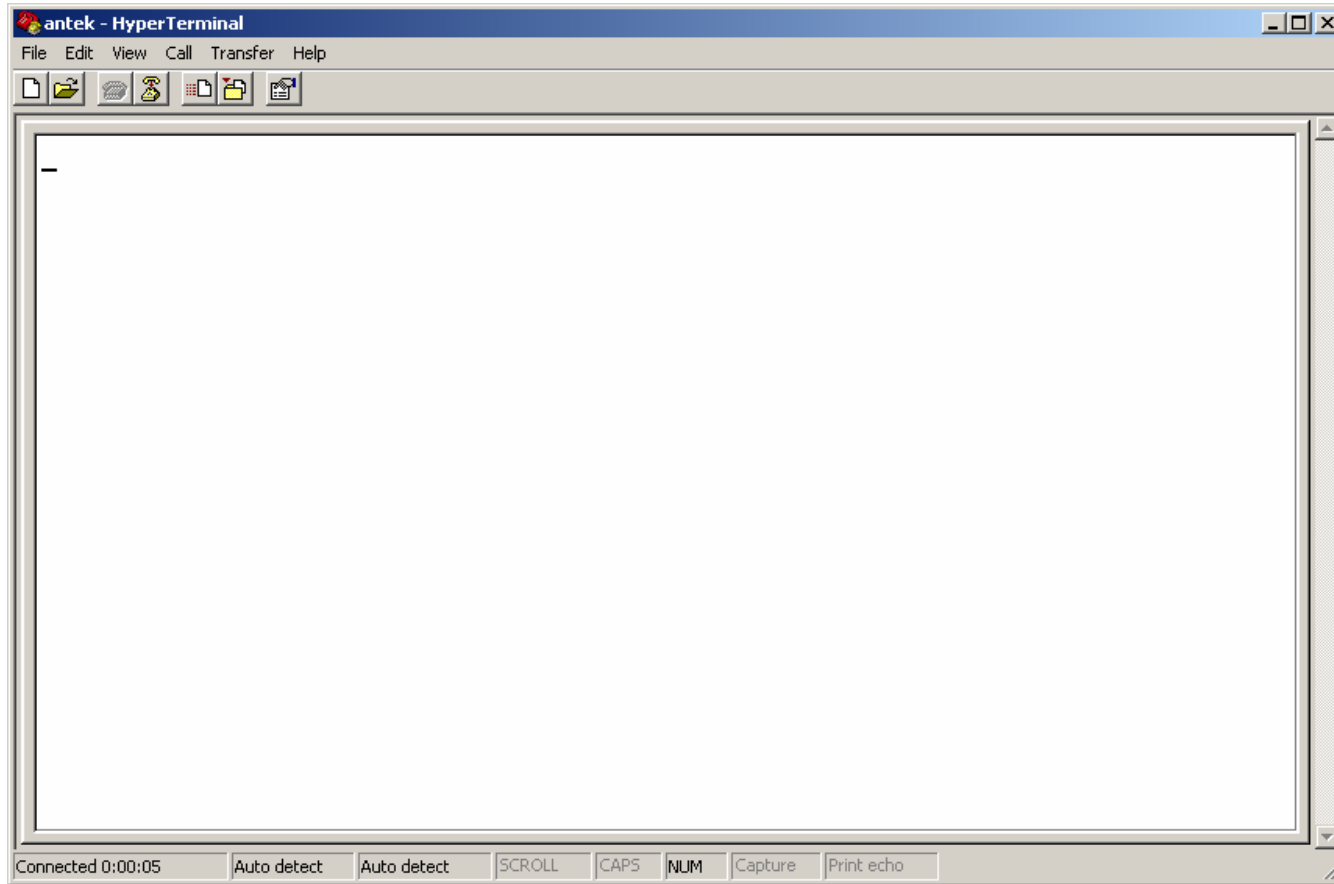
Parity = **None**.


Stop bits = **1**.

Flow control = **None**.

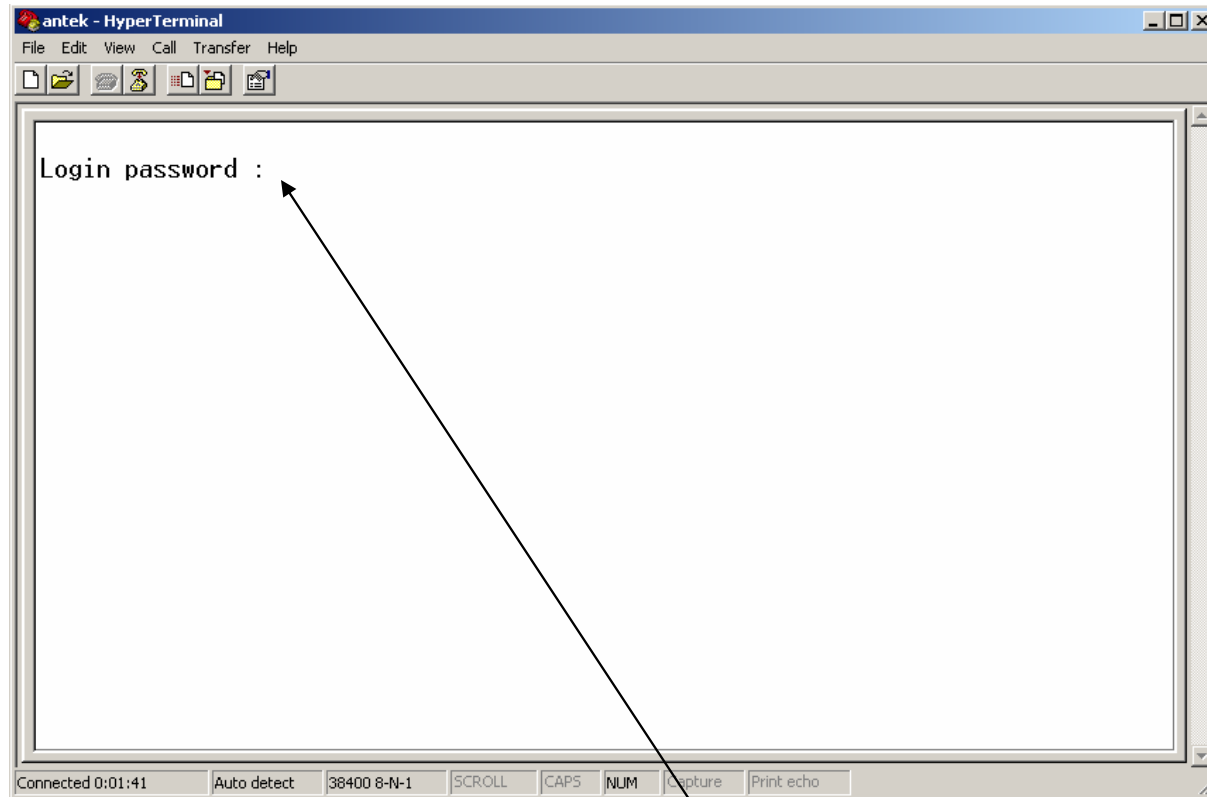
Klik **OK**.

Hyper Terminal



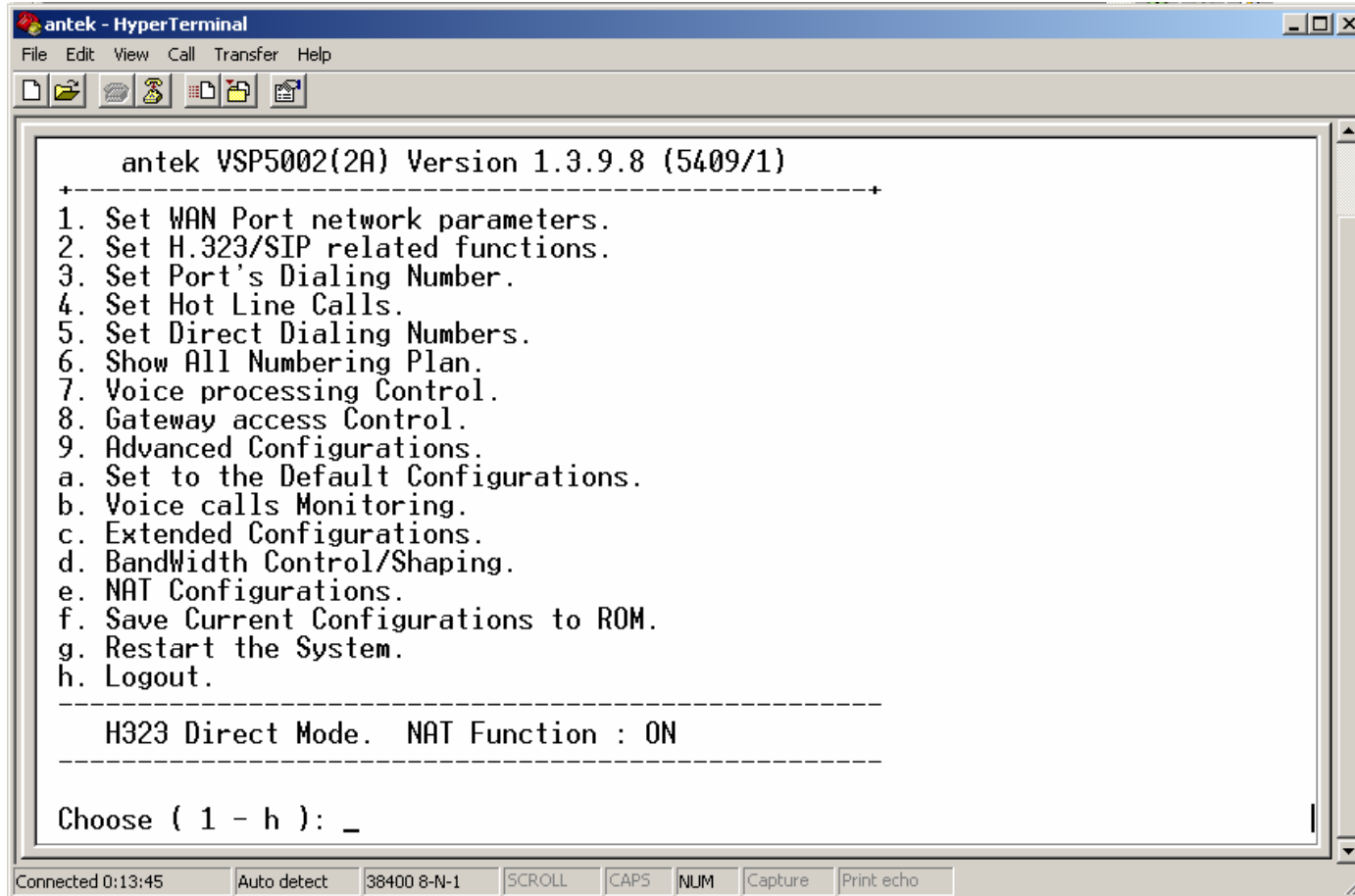
Tekan  Enter untuk memasukkan Password.

Login Password



Secara Default Login Password = **antek**. Dan tekan **Enter**.
Password Default = **antek**, dapat Anda lihat di CD / buku manual.

Hyper Terminal Configuration

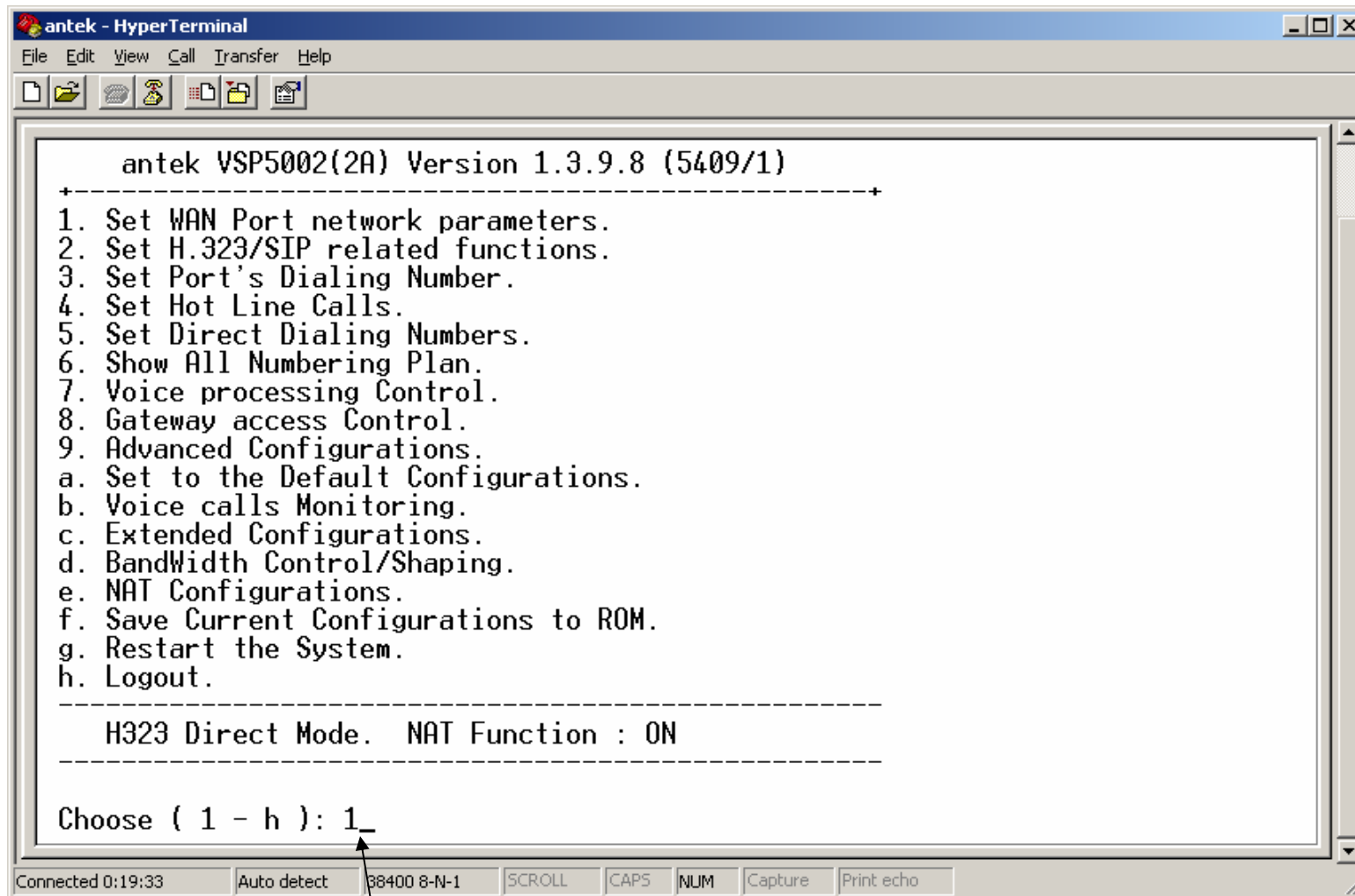


```
antek - HyperTerminal
File Edit View Call Transfer Help
antek VSP5002(2A) Version 1.3.9.8 (5409/1)
-----+-----
1. Set WAN Port network parameters.
2. Set H.323/SIP related functions.
3. Set Port's Dialing Number.
4. Set Hot Line Calls.
5. Set Direct Dialing Numbers.
6. Show All Numbering Plan.
7. Voice processing Control.
8. Gateway access Control.
9. Advanced Configurations.
  a. Set to the Default Configurations.
  b. Voice calls Monitoring.
  c. Extended Configurations.
  d. BandWidth Control/Shaping.
  e. NAT Configurations.
  f. Save Current Configurations to ROM.
  g. Restart the System.
  h. Logout.
-----
H323 Direct Mode.  NAT Function : ON
-----
Choose ( 1 - h ): _
```

Connected 0:13:45 Auto detect 38400 8-N-1 SCROLL CAPS NUM Capture Print echo

Tampilan Utama Konfigurasi Antek VSP-5002 Series melalui **Hyper Terminal**.

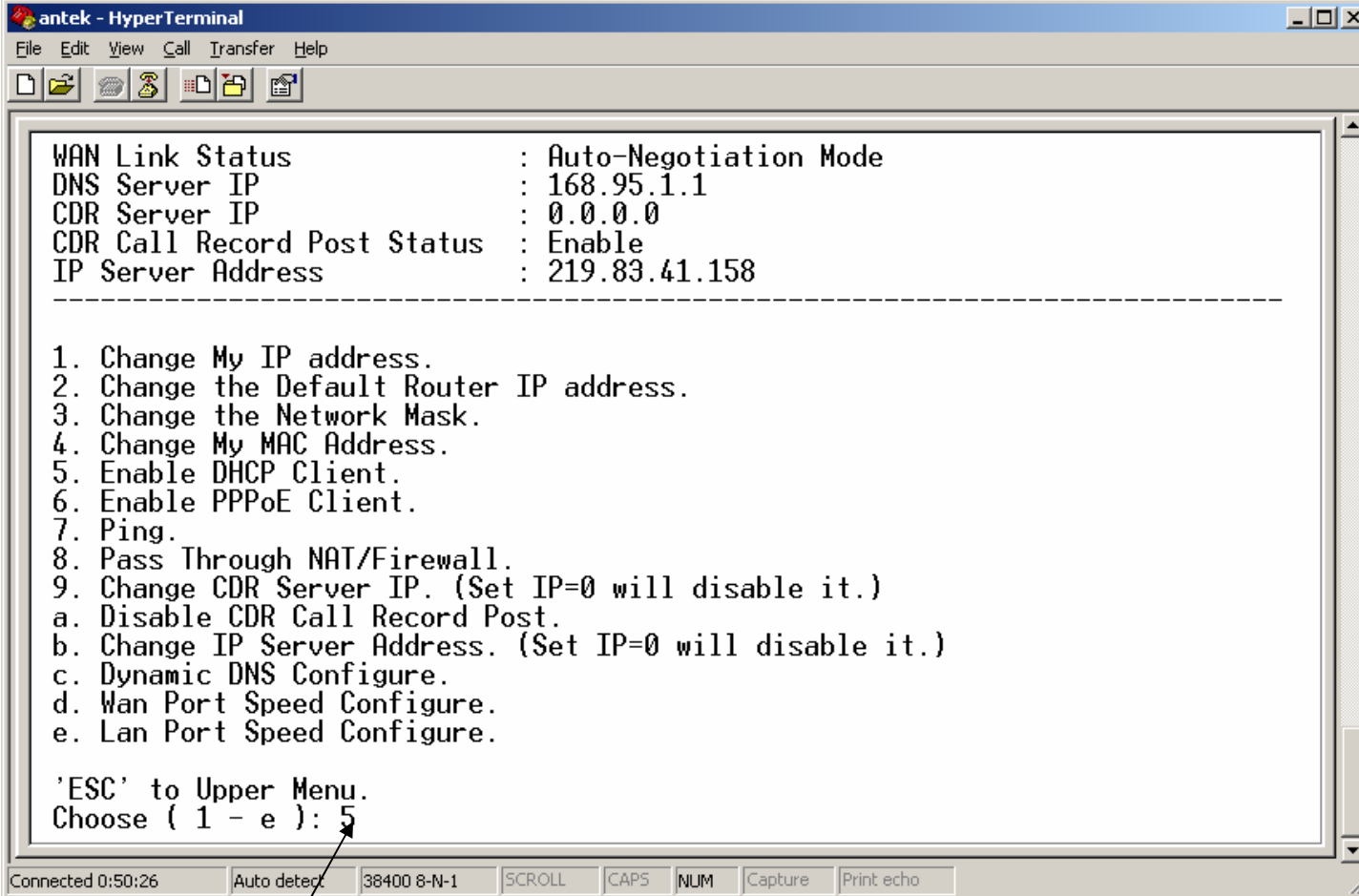
WAN Port network parameter



```
antek - HyperTerminal
File Edit View Call Transfer Help
antek VSP5002(2A) Version 1.3.9.8 (5409/1)
-----
1. Set WAN Port network parameters.
2. Set H.323/SIP related functions.
3. Set Port's Dialing Number.
4. Set Hot Line Calls.
5. Set Direct Dialing Numbers.
6. Show All Numbering Plan.
7. Voice processing Control.
8. Gateway access Control.
9. Advanced Configurations.
  a. Set to the Default Configurations.
  b. Voice calls Monitoring.
  c. Extended Configurations.
  d. BandWidth Control/Shaping.
  e. NAT Configurations.
  f. Save Current Configurations to ROM.
  g. Restart the System.
  h. Logout.
-----
H323 Direct Mode.  NAT Function : ON
-----
Choose ( 1 - h ): 1_
Connected 0:19:33  Auto detect  88400 8-N-1  SCROLL  CAPS  NUM  Capture  Print echo
```

Ketik **1** untuk konfigurasi Port jaringan WAN. Tekan **Enter**.

DHCP Client



The screenshot shows a HyperTerminal window titled 'antek - HyperTerminal'. The window contains a list of configuration options for a DHCP client. The options are:

```
WAN Link Status      : Auto-Negotiation Mode
DNS Server IP       : 168.95.1.1
CDR Server IP       : 0.0.0.0
CDR Call Record Post Status : Enable
IP Server Address   : 219.83.41.158
```

A dashed line separates the current settings from a menu of options:

1. Change My IP address.
2. Change the Default Router IP address.
3. Change the Network Mask.
4. Change My MAC Address.
5. Enable DHCP Client.
6. Enable PPPoE Client.
7. Ping.
8. Pass Through NAT/Firewall.
9. Change CDR Server IP. (Set IP=0 will disable it.)
 - a. Disable CDR Call Record Post.
 - b. Change IP Server Address. (Set IP=0 will disable it.)
 - c. Dynamic DNS Configure.
 - d. Wan Port Speed Configure.
 - e. Lan Port Speed Configure.

Below the menu, it says: 'ESC' to Upper Menu. Choose (1 - e): 5

The status bar at the bottom of the window shows: Connected 0:50:26, Auto detect, 38400 8-N-1, SCROLL, CAPS, NUM, Capture, Print echo.

Ketik **5** untuk konfigurasi DHCP Client. Tekan **Enter**.

DHCP Client Configuration

```
antek - HyperTerminal
File Edit View Call Transfer Help
[Icons]
-----
CDR Server IP           : 0.0.0.0
CDR Call Record Post Status : Enable
IP Server Address      : 219.83.41.158
-----
1. Change My IP address.
2. Change the Default Router IP address.
3. Change the Network Mask.
4. Change My MAC Address.
5. Enable DHCP Client.
6. Enable PPPoE Client.
7. Ping.
8. Pass Through NAT/Firewall.
9. Change CDR Server IP. (Set IP=0 will disable it.)
  a. Disable CDR Call Record Post.
  b. Change IP Server Address. (Set IP=0 will disable it.)
  c. Dynamic DNS Configure.
  d. Wan Port Speed Configure.
  e. Lan Port Speed Configure.

'ESC' to Upper Menu.
Choose ( 1 - e ): 5

Are you sure to enable the DHCP function?(Y/N): n
```

Connected 0:52:56 Auto detect 38400 8-N-1 SCROLL CAPS NUM Capture Print echo

Ketik **n** untuk disable the DHCP function. Tekan **Enter**.

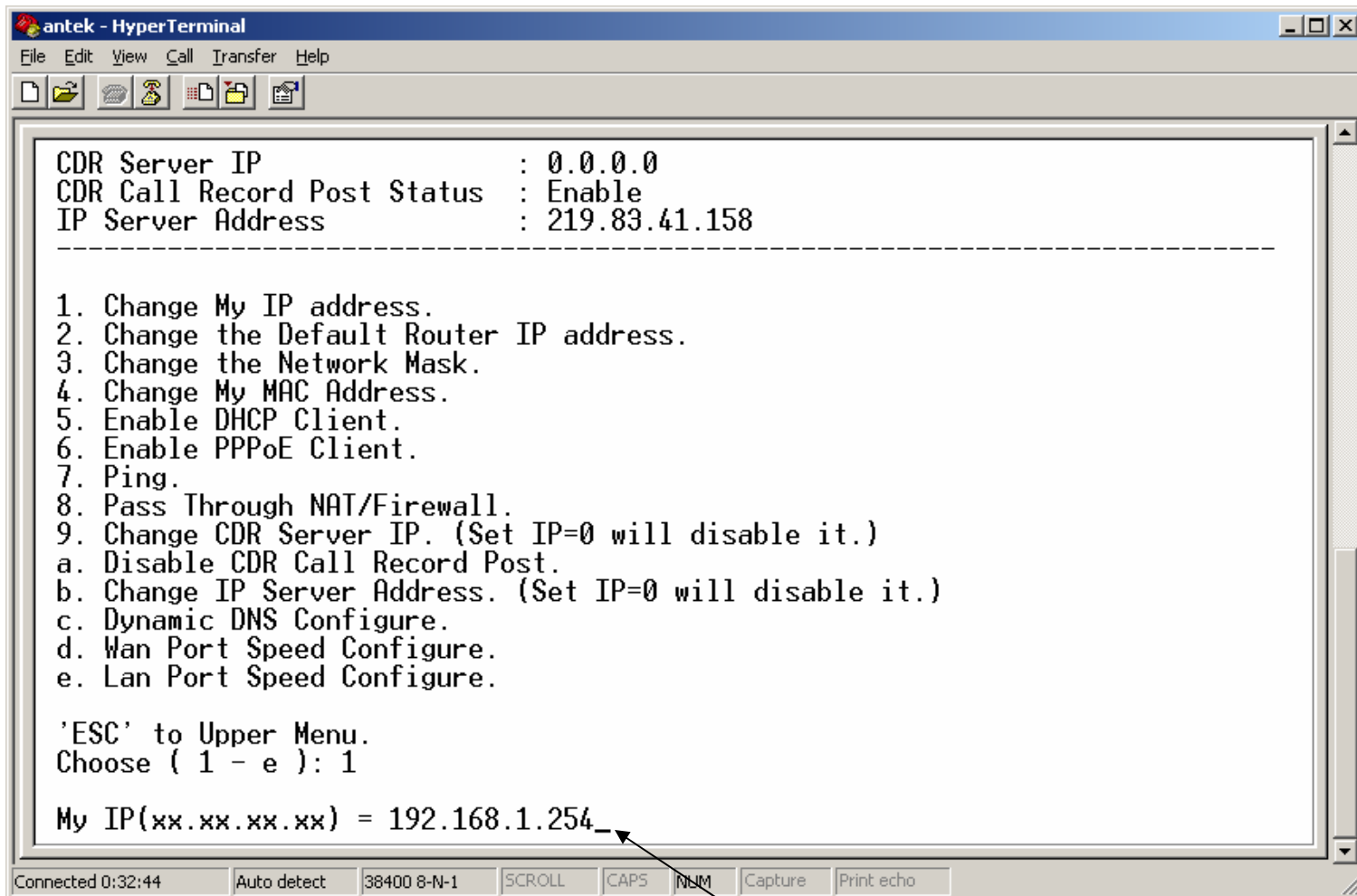
Change IP My Address

```
antek - HyperTerminal
File Edit View Call Transfer Help
[Icons]
-----
WAN Link Status           : Auto-Negotiation Mode
DNS Server IP             : 168.95.1.1
CDR Server IP             : 0.0.0.0
CDR Call Record Post Status : Enable
IP Server Address         : 219.83.41.158
-----
1. Change My IP address.
2. Change the Default Router IP address.
3. Change the Network Mask.
4. Change My MAC Address.
5. Enable DHCP Client.
6. Enable PPPoE Client.
7. Ping.
8. Pass Through NAT/Firewall.
9. Change CDR Server IP. (Set IP=0 will disable it.)
  a. Disable CDR Call Record Post.
  b. Change IP Server Address. (Set IP=0 will disable it.)
  c. Dynamic DNS Configure.
  d. Wan Port Speed Configure.
  e. Lan Port Speed Configure.

'ESC' to Upper Menu.
Choose ( 1 - e ): 1
-----
Connected 0:27:14  Auto detect  38400 8-N-1  SCROLL  CAPS  NUM  Capture  Print echo
```

Ketik **1** untuk konfigurasi IP Address Antek VSP-5002 Series. Tekan **Enter**.

IP Address Configuration



```
antek - HyperTerminal
File Edit View Call Transfer Help
[Icons]
-----
CDR Server IP           : 0.0.0.0
CDR Call Record Post Status : Enable
IP Server Address      : 219.83.41.158
-----

1. Change My IP address.
2. Change the Default Router IP address.
3. Change the Network Mask.
4. Change My MAC Address.
5. Enable DHCP Client.
6. Enable PPPoE Client.
7. Ping.
8. Pass Through NAT/Firewall.
9. Change CDR Server IP. (Set IP=0 will disable it.)
  a. Disable CDR Call Record Post.
  b. Change IP Server Address. (Set IP=0 will disable it.)
  c. Dynamic DNS Configure.
  d. Wan Port Speed Configure.
  e. Lan Port Speed Configure.

'ESC' to Upper Menu.
Choose ( 1 - e ): 1

My IP(xx.xx.xx.xx) = 192.168.1.254_
-----
Connected 0:32:44  Auto detect  38400 8-N-1  SCROLL  CAPS  NUM  Capture  Print echo
```

Isi IP Address, misalnya **192.168.1.254**. Tekan **Enter**.

Default Router IP Address

```
antek - HyperTerminal
File Edit View Call Transfer Help

WAN Link Status      : Auto-Negotiation Mode
DNS Server IP       : 168.95.1.1
CDR Server IP       : 0.0.0.0
CDR Call Record Post Status : Enable
IP Server Address   : 219.83.41.158
-----

1. Change My IP address.
2. Change the Default Router IP address.
3. Change the Network Mask.
4. Change My MAC Address.
5. Enable DHCP Client.
6. Enable PPPoE Client.
7. Ping.
8. Pass Through NAT/Firewall.
9. Change CDR Server IP. (Set IP=0 will disable it.)
  a. Disable CDR Call Record Post.
  b. Change IP Server Address. (Set IP=0 will disable it.)
  c. Dynamic DNS Configure.
  d. Wan Port Speed Configure.
  e. Lan Port Speed Configure.

'ESC' to Upper Menu.
Choose ( 1 - e ): 2

Connected 0:36:15  Auto detect  38400 8-N-1  SCROLL  CAPS  NUM  Capture  Print echo
```

Ketik **2** untuk konfigurasi Default Router IP Address. Tekan **Enter**.

Router IP Configuration

```
antek - HyperTerminal
File Edit View Call Transfer Help

CDR Server IP           : 0.0.0.0
CDR Call Record Post Status : Enable
IP Server Address      : 219.83.41.158
-----

1. Change My IP address.
2. Change the Default Router IP address.
3. Change the Network Mask.
4. Change My MAC Address.
5. Enable DHCP Client.
6. Enable PPPoE Client.
7. Ping.
8. Pass Through NAT/Firewall.
9. Change CDR Server IP. (Set IP=0 will disable it.)
  a. Disable CDR Call Record Post.
  b. Change IP Server Address. (Set IP=0 will disable it.)
  c. Dynamic DNS Configure.
  d. Wan Port Speed Configure.
  e. Lan Port Speed Configure.

'ESC' to Upper Menu.
Choose ( 1 - e ): 2

Default Router IP(xx.xx.xx.xx) = 192.168.1.1_

Connected 0:40:51  Auto detect  38400 8-N-1  SCROLL  CAPS  NUM  Capture  Print echo
```

Isi Default Router IP, misalnya **192.168.1.1**. Tekan **Enter**.

Change the Network Mask

```
antek - HyperTerminal
File Edit View Call Transfer Help

WAN Link Status      : Auto-Negotiation Mode
DNS Server IP       : 168.95.1.1
CDR Server IP       : 0.0.0.0
CDR Call Record Post Status : Enable
IP Server Address   : 219.83.41.158
-----

1. Change My IP address.
2. Change the Default Router IP address.
3. Change the Network Mask.
4. Change My MAC Address.
5. Enable DHCP Client.
6. Enable PPPoE Client.
7. Ping.
8. Pass Through NAT/Firewall.
9. Change CDR Server IP. (Set IP=0 will disable it.)
  a. Disable CDR Call Record Post.
  b. Change IP Server Address. (Set IP=0 will disable it.)
  c. Dynamic DNS Configure.
  d. Wan Port Speed Configure.
  e. Lan Port Speed Configure.

'ESC' to Upper Menu.
Choose ( 1 - e ): 3
```

Connected 0:43:09 Auto detect 38400 8-N-1 SCROLL CAPS NUM Capture Print echo

Ketik **3** untuk konfigurasi Network Mask. Tekan **Enter**.

Network Mask Configuration

```
antek - HyperTerminal
File Edit View Call Transfer Help

CDR Server IP           : 0.0.0.0
CDR Call Record Post Status : Enable
IP Server Address      : 219.83.41.158
-----

1. Change My IP address.
2. Change the Default Router IP address.
3. Change the Network Mask.
4. Change My MAC Address.
5. Enable DHCP Client.
6. Enable PPPoE Client.
7. Ping.
8. Pass Through NAT/Firewall.
9. Change CDR Server IP. (Set IP=0 will disable it.)
  a. Disable CDR Call Record Post.
  b. Change IP Server Address. (Set IP=0 will disable it.)
  c. Dynamic DNS Configure.
  d. Wan Port Speed Configure.
  e. Lan Port Speed Configure.

'ESC' to Upper Menu.
Choose ( 1 - e ): 3

Network Mask(xx.xx.xx.xx) = 255.255.255.0_

Connected 0:45:39  Auto detect  38400 8-N-1  SCROLL  CAPS  NUM  Capture  Print echo
```

Isi Network Mask, misalnya **255.255.255.0**. Tekan **Enter**.

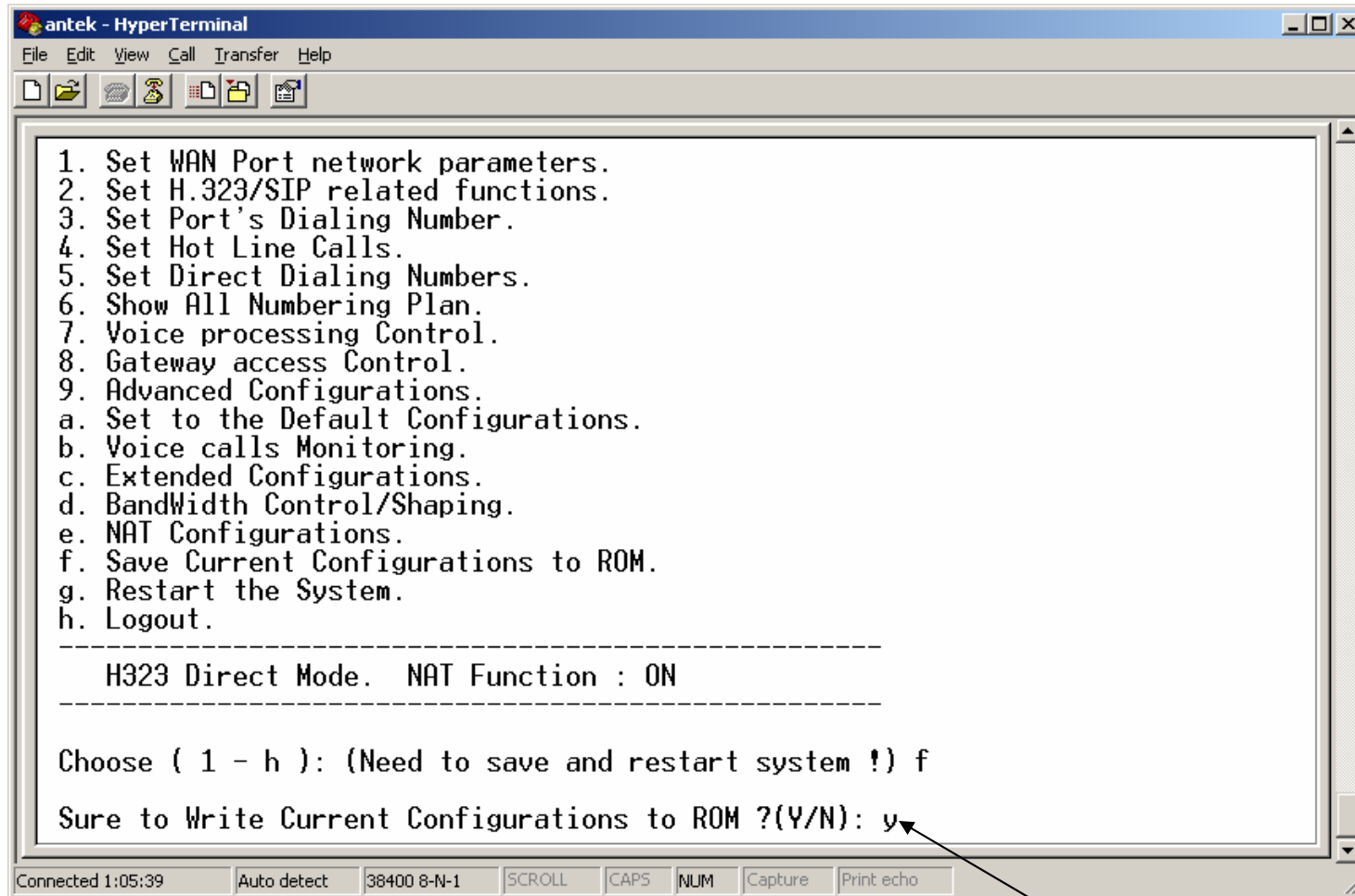
Save Current Configuration

```
antek - HyperTerminal
File Edit View Call Transfer Help
antek VSP5002(2A) Version 1.3.9.8 (5409/1)
+-----+
1. Set WAN Port network parameters.
2. Set H.323/SIP related functions.
3. Set Port's Dialing Number.
4. Set Hot Line Calls.
5. Set Direct Dialing Numbers.
6. Show All Numbering Plan.
7. Voice processing Control.
8. Gateway access Control.
9. Advanced Configurations.
  a. Set to the Default Configurations.
  b. Voice calls Monitoring.
  c. Extended Configurations.
  d. BandWidth Control/Shaping.
  e. NAT Configurations.
  f. Save Current Configurations to ROM.
  g. Restart the System.
  h. Logout.
-----
H323 Direct Mode. NAT Function : ON
-----
Choose ( 1 - h ): (Need to save and restart system !) f_
```

Untuk kembali ke menu sebelumnya tekan **Esc**.

Dan untuk menyimpan semua konfigurasi ke ROM ketik **f**. Tekan **Enter**.

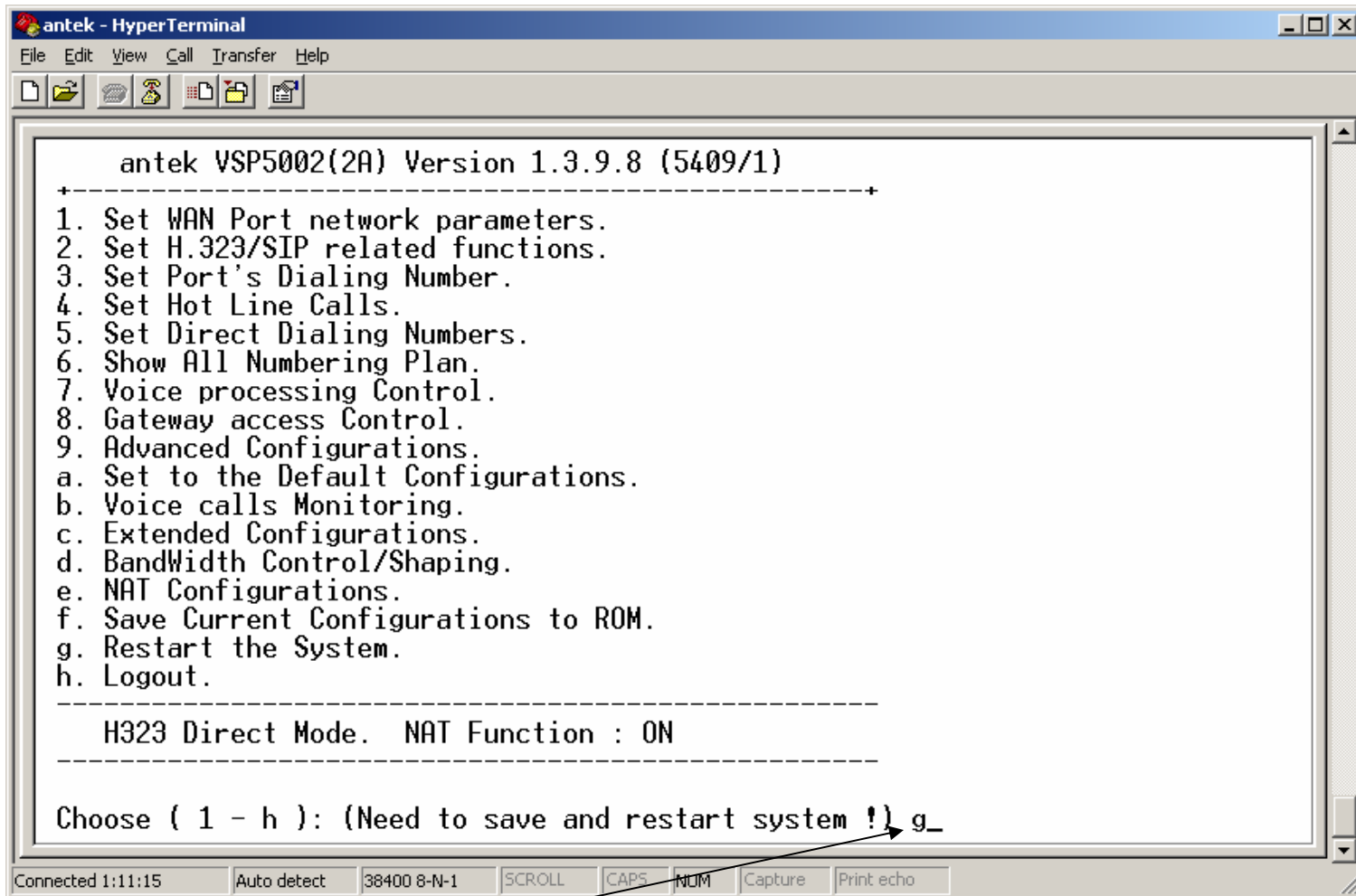
Save Confirmation



```
antek - HyperTerminal
File Edit View Call Transfer Help
[Icons]
1. Set WAN Port network parameters.
2. Set H.323/SIP related functions.
3. Set Port's Dialing Number.
4. Set Hot Line Calls.
5. Set Direct Dialing Numbers.
6. Show All Numbering Plan.
7. Voice processing Control.
8. Gateway access Control.
9. Advanced Configurations.
  a. Set to the Default Configurations.
  b. Voice calls Monitoring.
  c. Extended Configurations.
  d. BandWidth Control/Shaping.
  e. NAT Configurations.
  f. Save Current Configurations to ROM.
  g. Restart the System.
  h. Logout.
-----
H323 Direct Mode. NAT Function : ON
-----
Choose ( 1 - h ): (Need to save and restart system !) f
Sure to Write Current Configurations to ROM?(Y/N): y
-----
Connected 1:05:39 Auto detect 38400 8-N-1 SCROLL CAPS NUM Capture Print echo
```

Untuk menyetujui semua konfigurasi disimpan ke ROM ketik **y**. Tekan **Enter**.

Restart the System

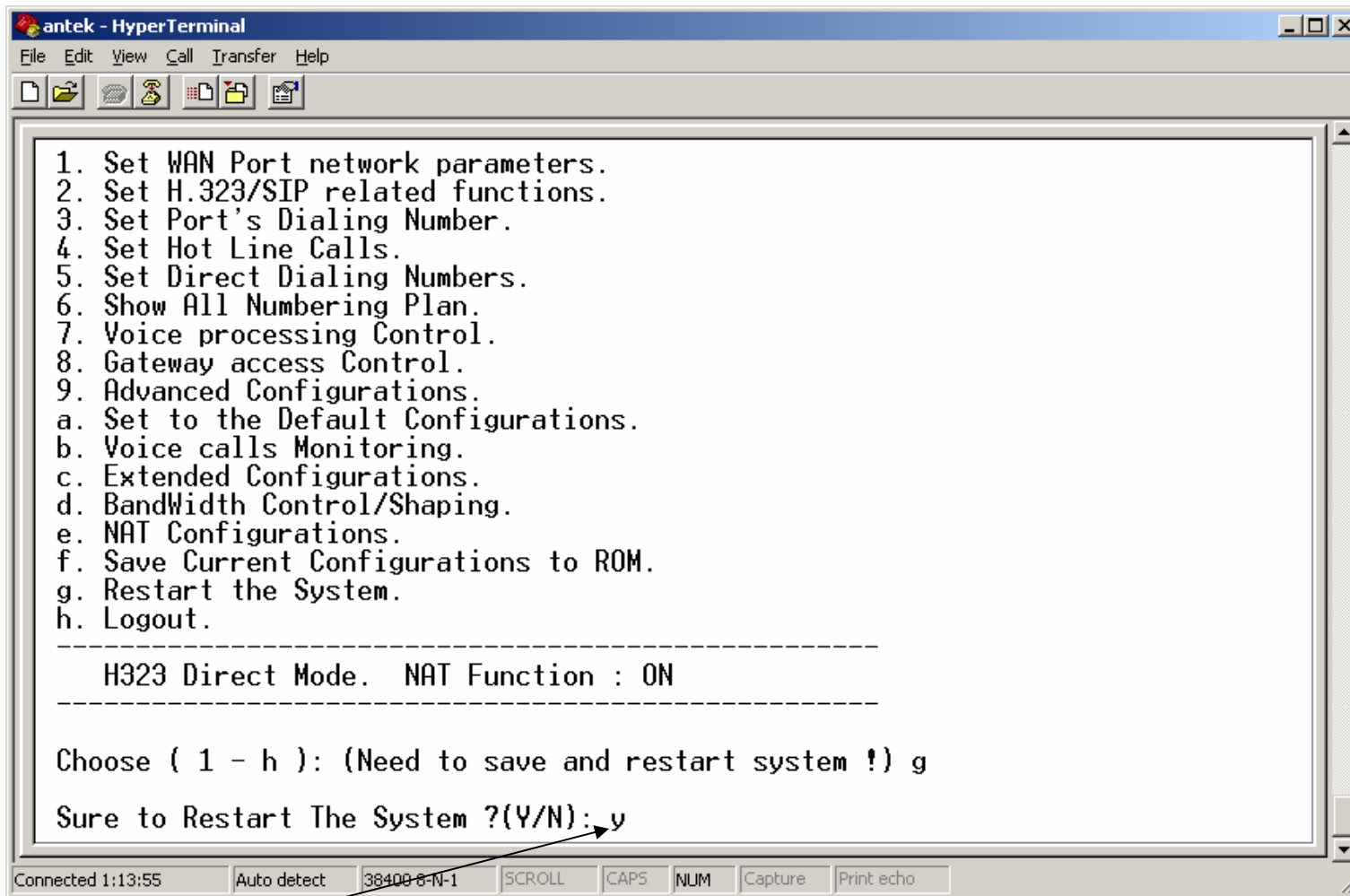


```
antek VSP5002(2A) Version 1.3.9.8 (5409/1)
+-----+
1. Set WAN Port network parameters.
2. Set H.323/SIP related functions.
3. Set Port's Dialing Number.
4. Set Hot Line Calls.
5. Set Direct Dialing Numbers.
6. Show All Numbering Plan.
7. Voice processing Control.
8. Gateway access Control.
9. Advanced Configurations.
  a. Set to the Default Configurations.
  b. Voice calls Monitoring.
  c. Extended Configurations.
  d. BandWidth Control/Shaping.
  e. NAT Configurations.
  f. Save Current Configurations to ROM.
  g. Restart the System.
  h. Logout.
-----
H323 Direct Mode.  NAT Function : ON
-----
Choose ( 1 - h ): (Need to save and restart system ! ) g_
```

Connected 1:11:15 Auto detect 38400 8-N-1 SCROLL CAPS NUM Capture Print echo

Ketik **g** untuk Restart sistem. Tekan **Enter**.

Restart Confirmation

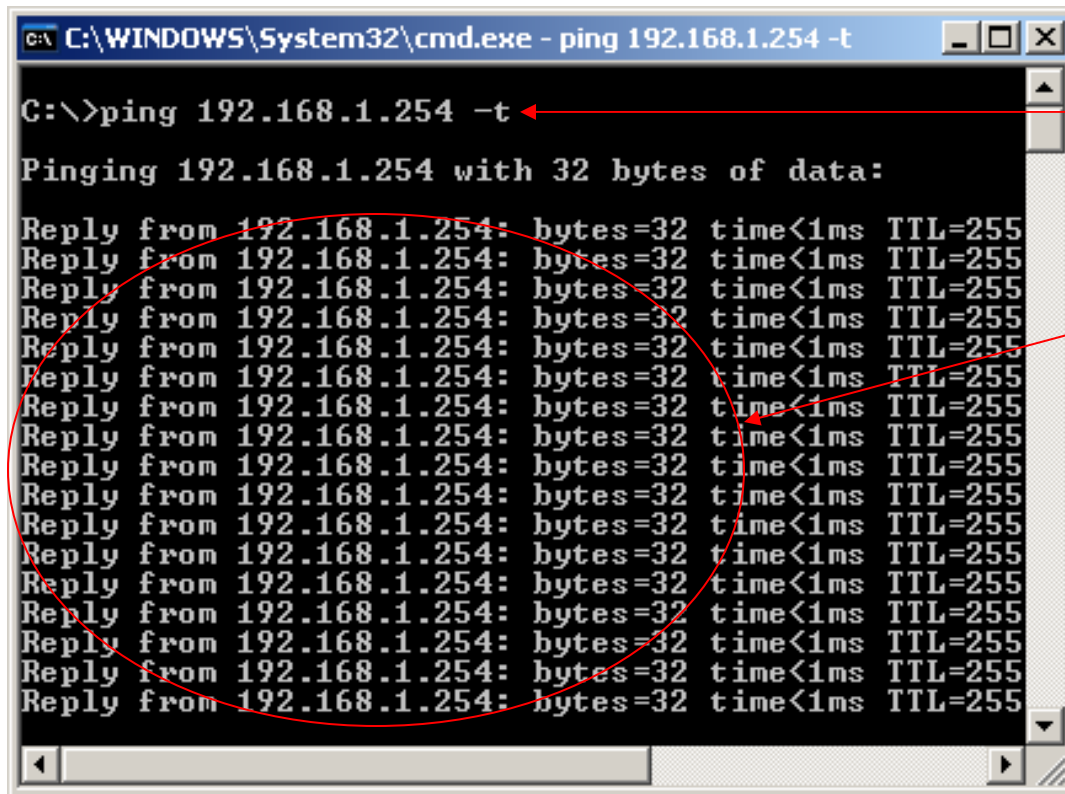


```
antek - HyperTerminal
File Edit View Call Transfer Help
[Icons]
1. Set WAN Port network parameters.
2. Set H.323/SIP related functions.
3. Set Port's Dialing Number.
4. Set Hot Line Calls.
5. Set Direct Dialing Numbers.
6. Show All Numbering Plan.
7. Voice processing Control.
8. Gateway access Control.
9. Advanced Configurations.
  a. Set to the Default Configurations.
  b. Voice calls Monitoring.
  c. Extended Configurations.
  d. BandWidth Control/Shaping.
  e. NAT Configurations.
  f. Save Current Configurations to ROM.
  g. Restart the System.
  h. Logout.
-----
H323 Direct Mode. NAT Function : ON
-----
Choose ( 1 - h ): (Need to save and restart system !) g
Sure to Restart The System ?(Y/N): y
```

Connected 1:13:55 Auto detect 38400 8-N-1 SCROLL CAPS NUM Capture Print echo

Ketik **y** untuk menyetujui proses restart sistem. Tekan **Enter**.

Connection Test

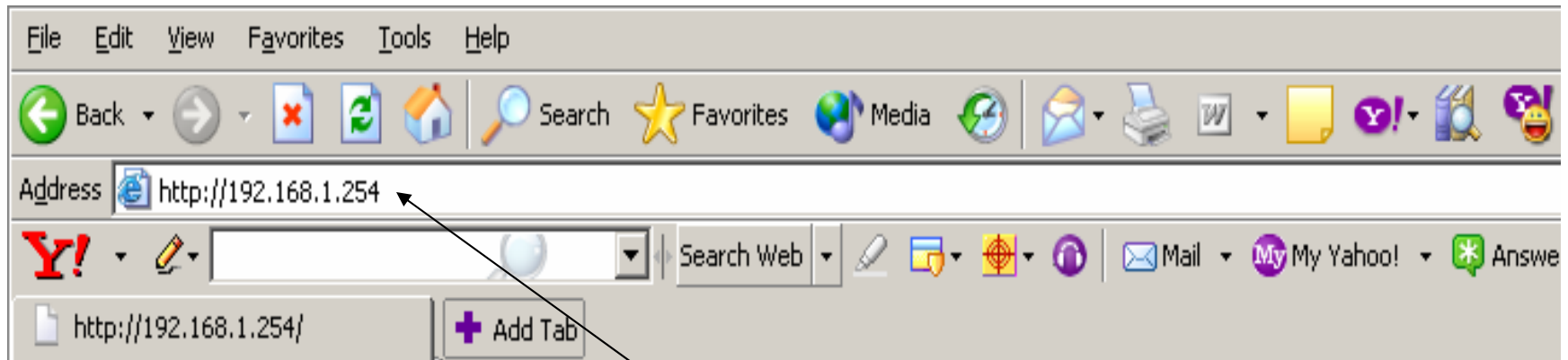


```
C:\WINDOWS\System32\cmd.exe - ping 192.168.1.254 -t
C:\>ping 192.168.1.254 -t
Pinging 192.168.1.254 with 32 bytes of data:
Reply from 192.168.1.254: bytes=32 time<1ms TTL=255
Reply from 192.168.1.254: bytes=32 time<1ms TTL=255
Reply from 192.168.1.254: bytes=32 time<1ms TTL=255
Reply from 192.168.1.254: bytes=32 time<1ms TTL=255
Reply from 192.168.1.254: bytes=32 time<1ms TTL=255
Reply from 192.168.1.254: bytes=32 time<1ms TTL=255
Reply from 192.168.1.254: bytes=32 time<1ms TTL=255
Reply from 192.168.1.254: bytes=32 time<1ms TTL=255
Reply from 192.168.1.254: bytes=32 time<1ms TTL=255
Reply from 192.168.1.254: bytes=32 time<1ms TTL=255
Reply from 192.168.1.254: bytes=32 time<1ms TTL=255
Reply from 192.168.1.254: bytes=32 time<1ms TTL=255
Reply from 192.168.1.254: bytes=32 time<1ms TTL=255
Reply from 192.168.1.254: bytes=32 time<1ms TTL=255
Reply from 192.168.1.254: bytes=32 time<1ms TTL=255
```

Pada Command Prompt, ketik **ping 192.168.1.254 -t** tekan **Enter**.

Jika **Reply from 192.168.1.254**, itu berarti Anda telah berhasil konfigurasi pada Hyper Terminal.

Web Browser



Setelah Anda konfigurasi di Cosole Hyper Terminal, maka sekarang Anda dapat konfigurasi pada Web browser. Ketik **192.168.1.254** pada Address bar.

192.168.1.254 di dapat dari IP Configuration yang Anda buat melalui **Hyper Terminal**.

Secure Access Login

Connect to 192.168.1.254

Secure Access

User name:

Password:

Remember my password

OK Cancel

User name di kosongkan (tidak diisi).

Password : **antek**.

Klik **OK**.

Secara default User name tidak diisi dan password **antek** bisa dilihat dari CD / buku manual Antek VSP-5002 Series.

Tampilan Utama

Tampilan Utama menu konfigurasi Antek VSP-5002 Series pada web browser.

antek

VSP5002

SIP+H.323+NAT VoIP Gateway

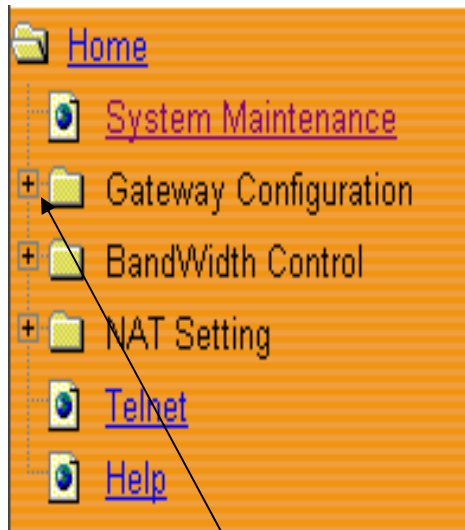
[Link to antek](#)

- Home
- System Maintenance
- Gateway Configuration
- BandWidth Control
- NAT Setting
- Telnnet
- Help

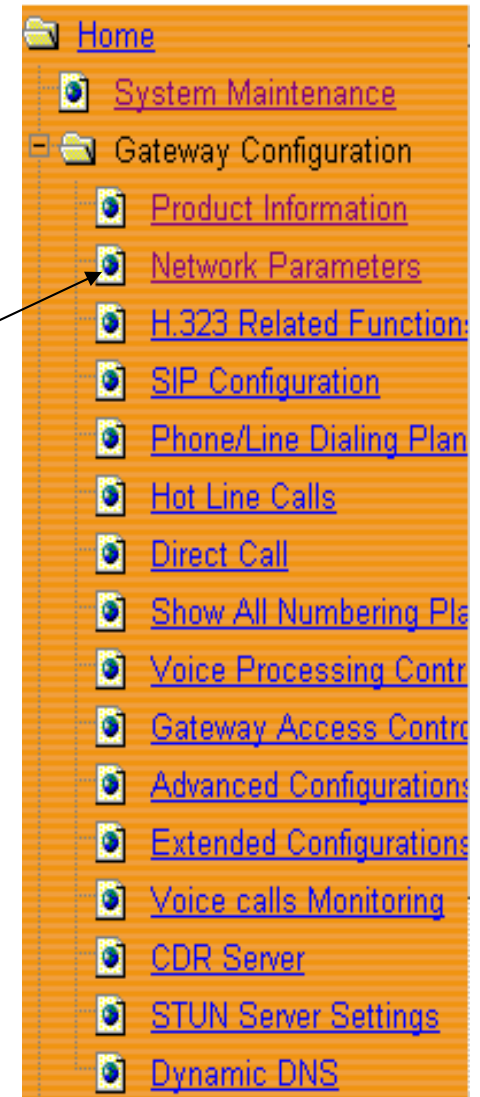
Outstanding Features

- Bandwidth Control -- Boost the voice quality (MOS value) from 1.0 to 3.8
- Single IP Solution -- Do not need additional public IP address.
- Robust Function -- Good voice quality even when packet loss rate is up to 20
- Anti-Line-Seizure -- Can detect the busy status of the PBX automatically.
- Dynamic IP Support -- Can use PPPoE or DHCP to get dynamic IP.
- Flexible Dialing Plan -- Enable number striping, prefixing to satisfy all application.
- CDR Server -- Support CDR server application on Windows.
- High Reliability -- Carrier grade reliability.
- High Interoperability -- Interoperable with Cisco, Lucent, OKI, Ericsson,....
- Management Interface -- Console, telnet, web, snmp

Network Parameter



Klik tanda + pada Gateway Configuration.



Klik **Network parameter**, untuk konfigurasi jaringan.

Set Network Parameter

Set Network Parameters

Get IP Address Setting Method	Static Set <input type="button" value="Select"/>
IP Address	172.19.51.4
Subnet Mask	255.255.255.224
Default Router	172.19.51.1
Ethernet MAC Address	00:04:0f:00:e7:f4

Get IP Address Setting Method pilih **Static Set**. Klik **Select**.

Isi IP Address, misalnya **172.19.51.4**.

Subnet Mask, misalnya **255.255.255.224**.

Default Router, misalnya **172.19.51.1**.

Klik **OK**.

H.323 Related Function Menu



← Klik menu **H.323 Related Function**, untuk memilih jenis protokol.

SIP Protocol

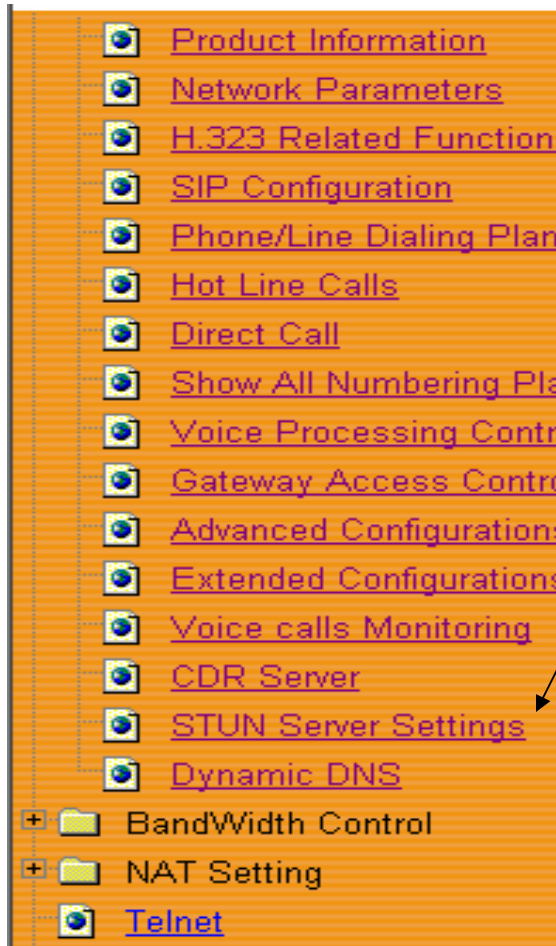
H.323 Configuration

Default VoIP Protocol	<input type="radio"/> H.323 <input checked="" type="radio"/> SIP
H323-ID	<input type="text"/>
Gatekeeper-ID	<input type="text"/>
Technology Prefix	<input type="text"/> (** For Hunting and Cisco Gatekeeper. **)
Primary Gatekeeper IP	<input type="text" value="0.0.0.0"/> (** set gatekeeper address = 0 will disable it. **)
Second Gatekeeper IP	<input type="text" value="0.0.0.0"/>

OK

Pilih jenis protokol yang ingin digunakan, misalnya **SIP**. Klik **OK**.

STUN Server Settings Menu



Klik **STUN Server Settings**, untuk konfigurasi STUN Server.

STUN Server

STUN Server

STUN Server Settings

STUN Enable/Disable	<input type="radio"/> Disable <input checked="" type="radio"/> Enable
STUN Server URL	<input type="text" value="202.153.128.34"/>
STUN Server Port	<input type="text" value="3478"/>

STUN Server pilih **Enable**.

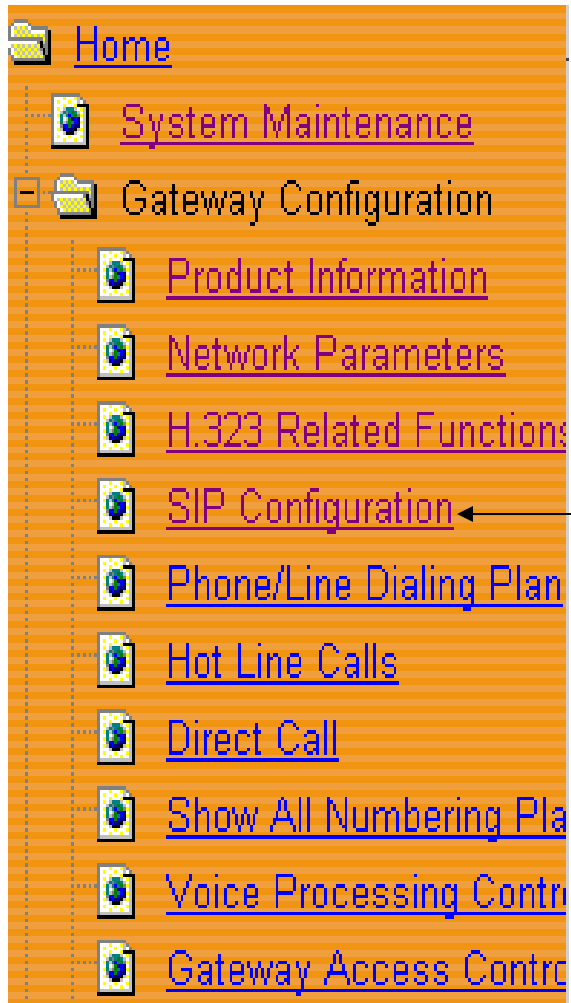
Isi STUN Server URL, misalnya **202.153.128.34**.

STUN Server, misalnya **3478**.



Klik **OK**.

SIP Configuration



Klik mnu SIP Configuration, untuk konfigurasi SIP protokol.

Set SIP Server Menu

Set SIP Server

Default VoIP Protocol	<input type="radio"/> H.323 <input checked="" type="radio"/> SIP	<input type="button" value="OK"/>
-----------------------	--	-----------------------------------

Default VoIP Protocol pilih **SIP**. Klik **OK**.

SIP Server	SIP Server Address/Port	Set SIP Server	Del SIP Server
SIP Server1	202.153.128.34/5060	<input type="button" value="ADD"/>	<input type="button" value="DEL"/>

SIP Server 1, misalnya **202.153.128.34/5060**. Klik **ADD**.

Outbound Settings Enable/Disable	<input type="radio"/> Disable <input checked="" type="radio"/> Enable
Outbound Proxy URIL	202.153.128.34
Outbound Proxy Port	5060
<input type="button" value="OK"/>	

Outbound Settings pilih **Enable**.
Outbound Proxy URL, misalnya **202.153.128.34**.

SIP Domain Enable/Disable	<input type="radio"/> Disable <input checked="" type="radio"/> Enable
SIP Domain URL	202.153.128.34
<input type="button" value="OK"/>	

SIP Domain pilih **Enable**.

SIP Domain URL, misalnya **202.153.128.34**. Klik **OK**.

Ket : IP **202.153.128.34** adalah alamat domain **voiprakyat.or.id**, dengan antek seri ini anda harus menggunakan nomor IP, bukan nama domain.

Set Register SIP

Set Register SIP Server Plan

Phone Num	SIP Svr	Password	RegTime (ok)	RegTime (fail)	Tel port	Status
27125	1	abc6982	300	10	1	ADD

Isi Phone number, misalnya **27125**.

Isi SIP Server, misalnya **1**.

Isi Password, misalnya **abc6982**.

Tel port = **1**.

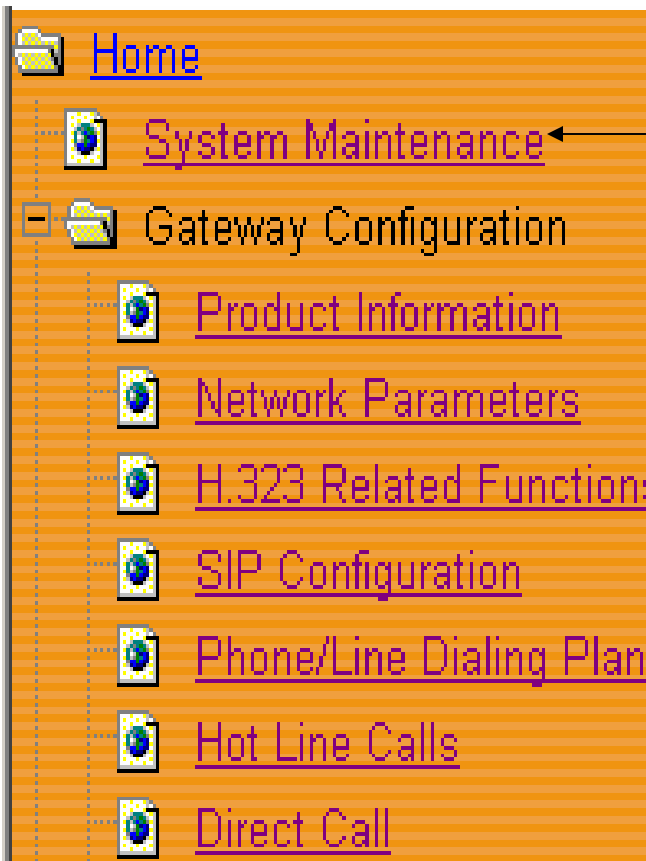
Klik **ADD**.

Ket :

Tel Port 1 diisi 1, jika Anda menghubungkan kabel PSTN pada port 1.

Tel Port 2 diisi 2, jika Anda menghubungkan kabel PSTN pada port 2.

System Maintenance Menu



Klik **System Maintenance**, untuk konfigurasi System Maintenance.

System Maintenance

System Maintenance

Set to Default Configurations	SET
Save Configurations to Flash	SAVE
Reset System	RESTART

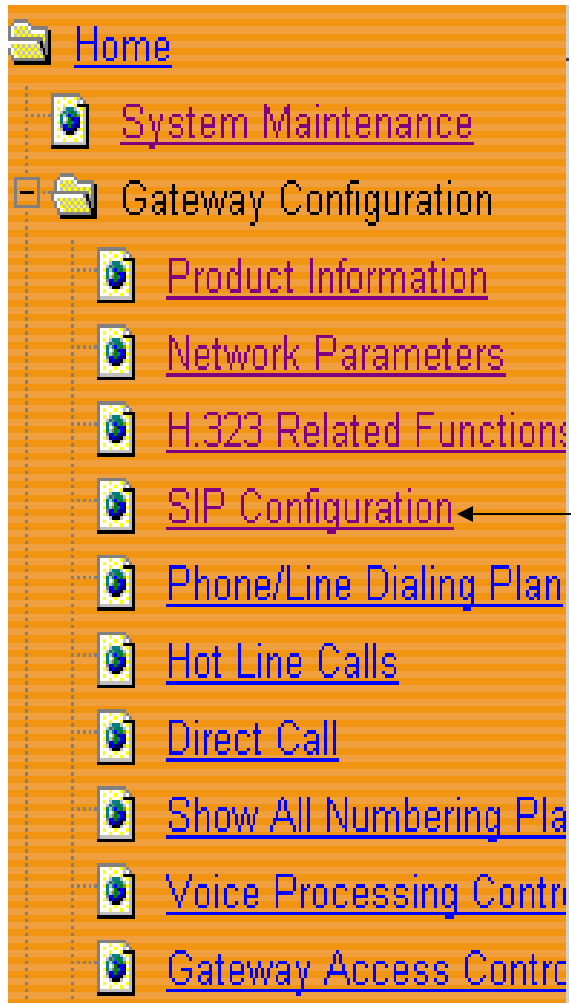
Klik **Save**, untuk menyimpan semua konfigurasi.

Klik **Restart**, untuk Restart sistem.

Restarting VoIP Gateway. Please wait 30 seconds, then re-open web page...

Setelah Anda klik Restart, maka Anda harus menunggu selama 30 detik.



Status Registrasi



Kembali ke menu menu SIP Configuration, untuk melihat status registrasi dengan SIP Proxy.

Register Successful

Set Register SIP Server Plan

Phone Num	SIP Svr	Password	RegTime (ok)	RegTime (fail)	Tel port	Status	
27125	1	abc6982	300	10	1	Reg OK	
			300	10			

Jika Status sudah **Reg OK**, maka Anda telah berhasil konfigurasi SIP Server Plan.

Terima Kasih Dan Selamat Mencoba

KONTAK

Jakarta Centre of ICT Studies

<http://www.ictcentre.net>

Jl. Pangkalan Jati II No.B1 Jakarta Timur

DKI Jakarta Indonesia 13620

Landline: +62 21 8613027

Fax: +62 21 8618952

VR: 0809 88 ICT

Penulis :

Sugar

SMK Negeri 1 Tangerang

bridgez1@yahoo.com

VR : 27125@voiprakyat.or.id

Editor :

Anton Raharja

anton@ngoprek.org