



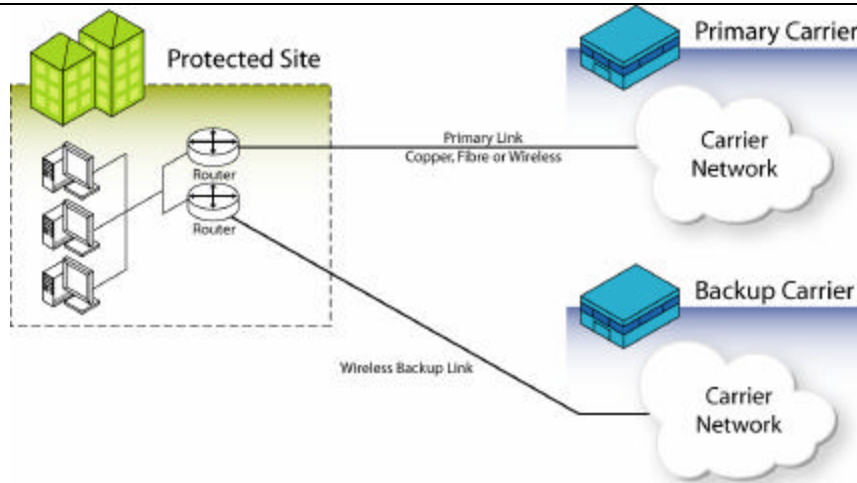
## Application Note

# Business Continuity

Legislators around the world have mandated that public service organizations, governments and business be 100% responsive in the event of loss of service or data. More emphasis is being placed on achieving continuity of operations — to stay up and running even in the event of planned or unplanned network failures due to system malfunctions, human errors or malicious acts. For every public or private sector organization, there are new and unique challenges to maintaining operational continuity. Redline can help your

## Broadband Fixed Wireless (BFW) connectivity provides alternate high-speed network links for ensuring business continuity for the SME, Enterprise or Government Agency

organization address these challenges successfully in this new era of readiness.



## Business Requirement

Continuity of operations is critical for any size business enterprise or government agency. Building it into your infrastructure can help your organization:

- *Maintain the organizational mission by avoiding disruptions due to loss of primary communications circuits;*
- *Ensure collaboration between organizations in times of crisis;*
- *Assert management and control through a crises;*
- *Comply with regulatory requirements;*

BFW ensures that each of these business requirements can be cost effectively and securely met by public and private network operators.

## Suggested Approach

There are three critical elements to achieving continuity:

**Planning and Recovery Services** — help organizations develop a holistic strategy to prepare people, processes and technologies for expected or unexpected potentially disruptive events – this is the first step towards a successful business continuity solution.

**High Availability Infrastructure** — help maintain accessibility to critical systems and data during a system failure or service outage via BFW should landline facilities be destroyed or compromised.

**Disaster Recovery Services** — to avoid the loss of critical systems and data after catastrophic events or disasters, BFW can provide high bandwidth “standby” services to your disaster recovery provider.

### Four Levels of Continuity

Achieving continuity requires implementing three key elements — services, high-availability and recovery — at all levels of your organization's IT infrastructure, including:

Platform Level — Your hardware.  
Data Level — Your information.  
Application Level — Your programs.  
Site Level — Your entire enterprise.

**Redline AN-50/AN-30:** Redline's systems are designed to provide high-speed data connectivity for:

- Medium and Large Enterprises
- Carriers and Service Providers
- Local and Regional Governments
- Schools, Libraries and Hospitals
- Public Safety Organizations
- Building Local Exchange Carriers
- Property Management Companies

### Typical Uses

- Quickly provide high speed IP and/or T1/E1 based equipment over long range wireless links
- Rapidly extend head office and regional office systems out to remote locations in need of recovery services
- Provide standby services to disaster recovery centers
- Provide for fast relocation of staff & critical equipment

### Key Features

- OFDM technology provides robust wireless links even in the presence of multipath interference
- Ability to operate in some non line of sight conditions
- Ranges of 80 km (50 miles)
- Extremely low latency for time sensitive applications like VoIP and video conferencing
- Offers high speed 64 QAM modulation
- Carrier class remote Network Management System support
- Over the air encryption
- AN-30: Carries up to 4 T1/E1 and up to 30 Mbps over 100BaseT interface
- AN-50: Carries up to 48 Mbps data rate over 100BaseT interface, point to point or point to multipoint
- Single or dual AC or DC power supplies for redundancy

### Benefits to Business Continuity Users

- Rapidly allows voice, video and data services to be re-established across multiple buildings in the event of landline failures
- Can support VoIP PBX /Video systems with low latency and jitter
- Can support both legacy applications and Ethernet transport and IP applications concurrently
- Reduces the cost of providing alternate high speed wireline data links between locations
- Proactive remote management and diagnostic tools for your telephony and IT staff
- Can also be used as overflow transport during peak traffic conditions

Available Via:



302 Town Centre Blvd.  
Markham, ON  
Canada L3R 0E8  
(905) 479-8344

[www.redlinecommunications.com](http://www.redlinecommunications.com)

Ref: 030813501